

# QUICK INSTALLATION GUIDE

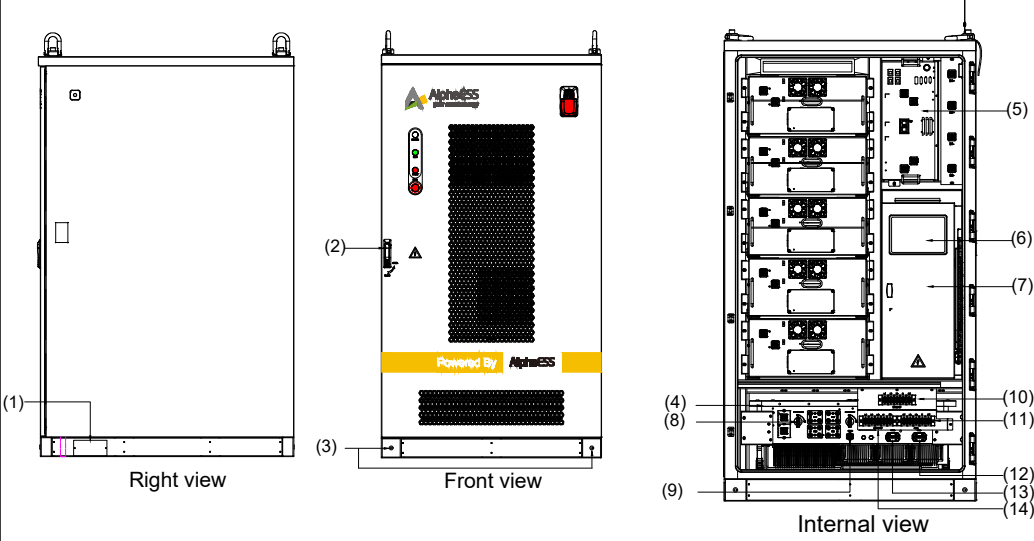
Energy System (STORION-H30/H50-G3)

## 1. Product Overview

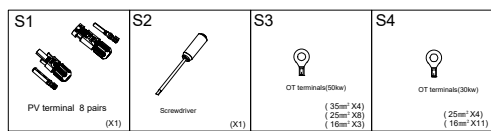
- (1) External cable entry holes
- (2) Cabinet door lock
- (3) Grounding location\*4
- (4) PCS
- (5) HV Box

- (6) SCADA
- (7) Distribution Box
- (8) DC Circuit Breaker
- (9) COM1 port
- (10) BACK-UP output terminal

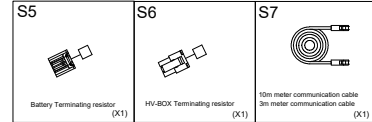
- (11) Genset output terminal
- (12) COM3 port(reserve)
- (13) COM2 port
- (14) On-grid output terminal



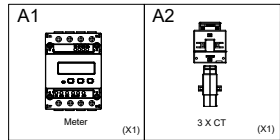
### 1.1 Packing List (Inside the Cabinet)



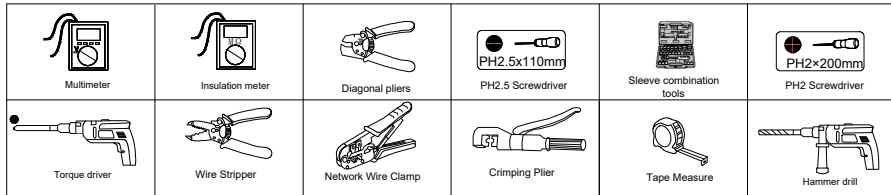
### Reserve



### 1.2 Packing List (Outside the Cabinet)

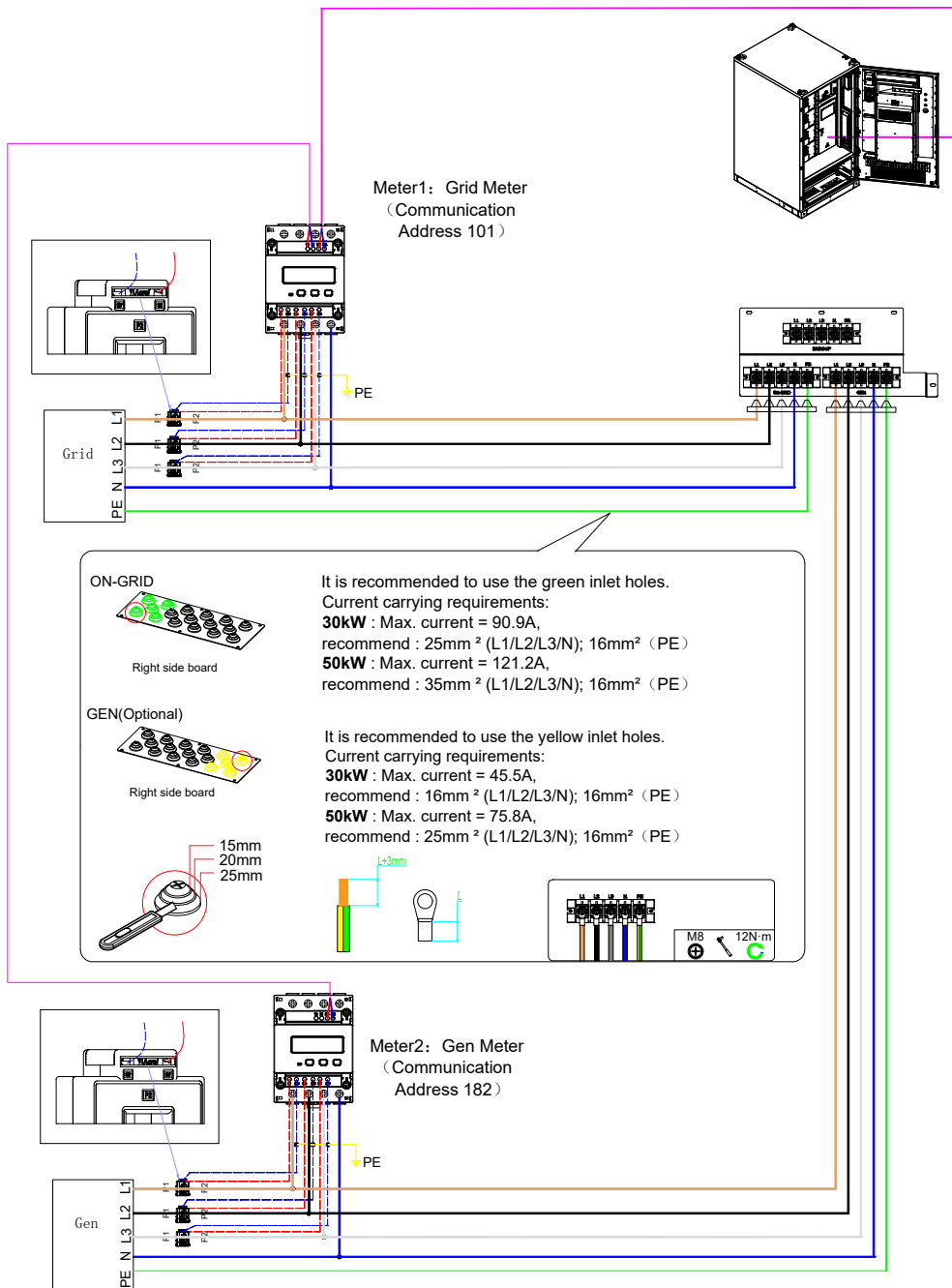


## 2. Installation Tools



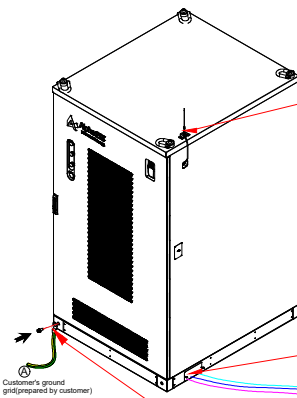
### Step5:Grid/Gen side connection.

XT4:13B-485A  
XT4:15B-485B

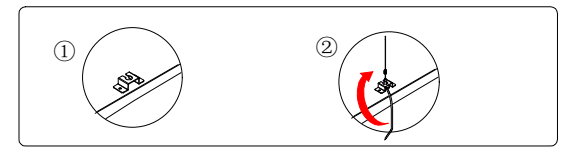


## 3. Installing the Product

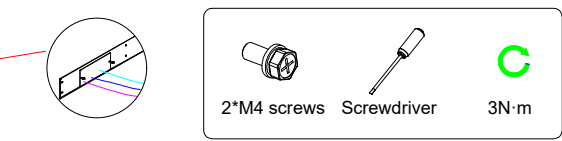
**Note** : Before proceeding to the next steps, please check all connected cables to ensure that the wiring is secure and that there is no visible damage. If any damage is found, please contact our service engineer.



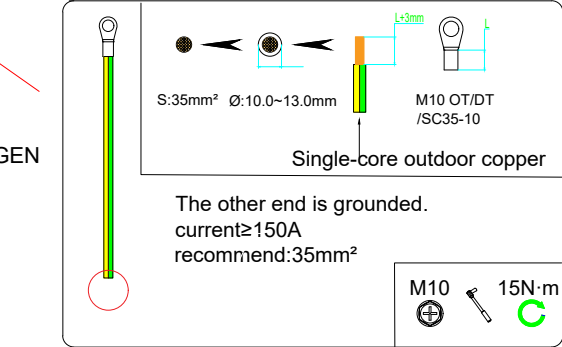
### Step1: Fixed antenna.



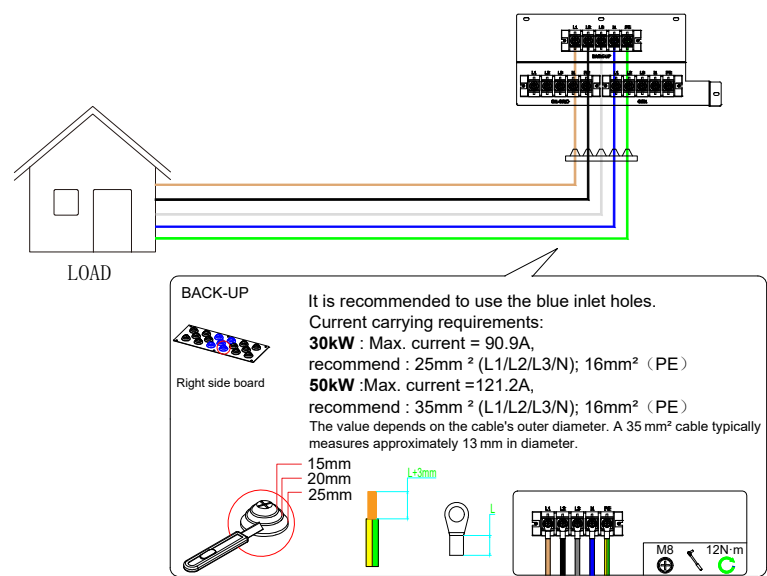
### Step2:Remove the wire cover.



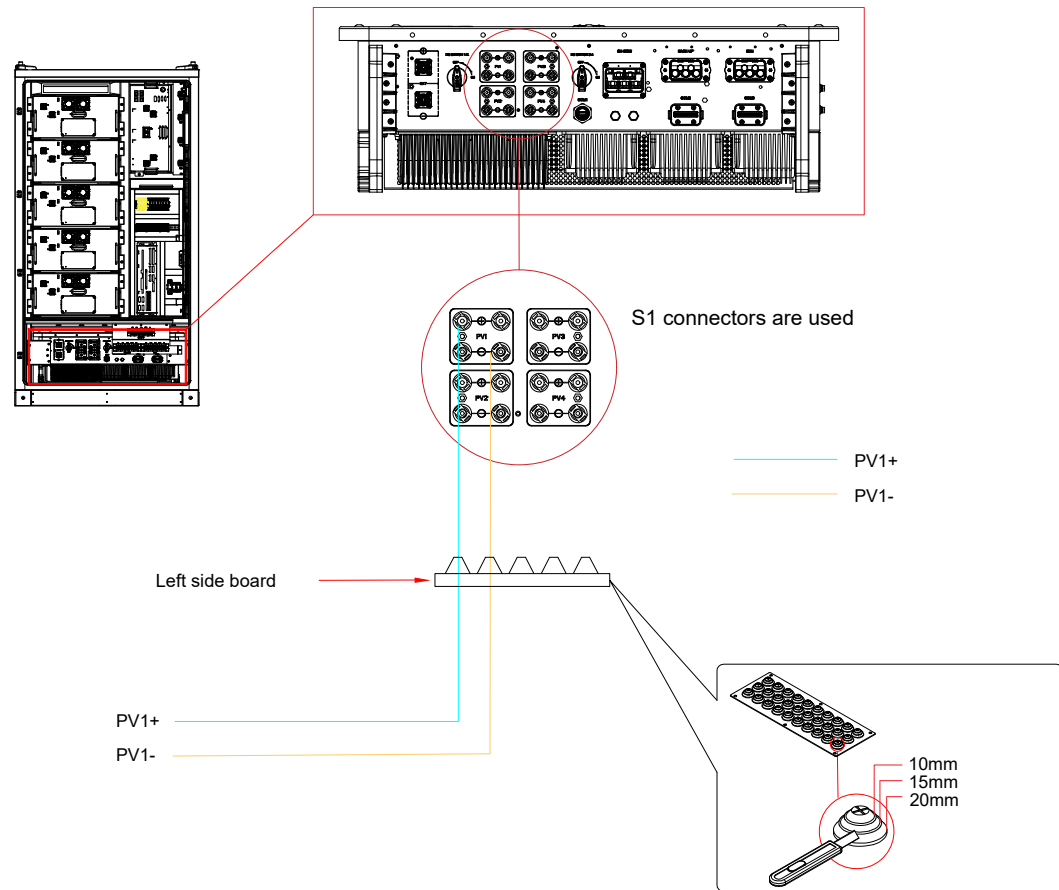
### Step3:Install Ground Cable.



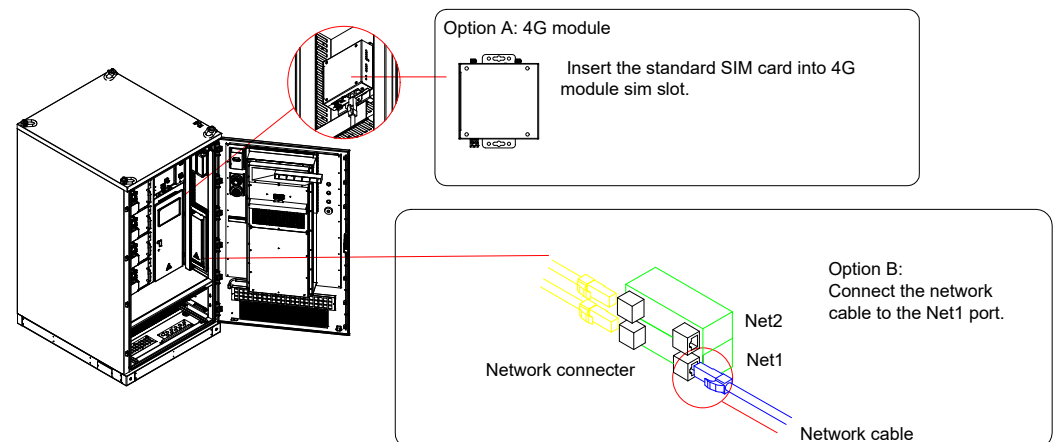
### Step4:Load side connection.



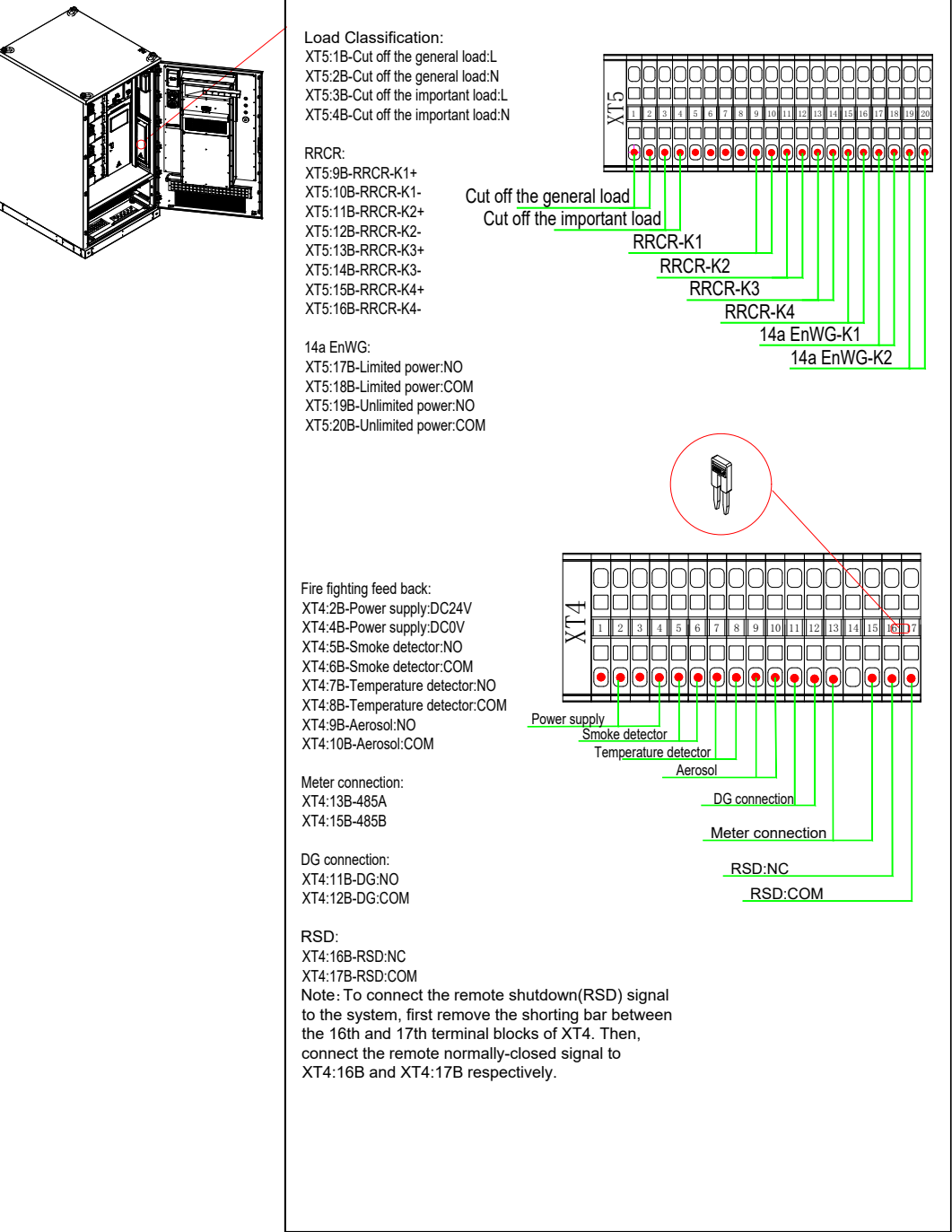
### Step6:PV side connection.



### Step7:Connect to the network

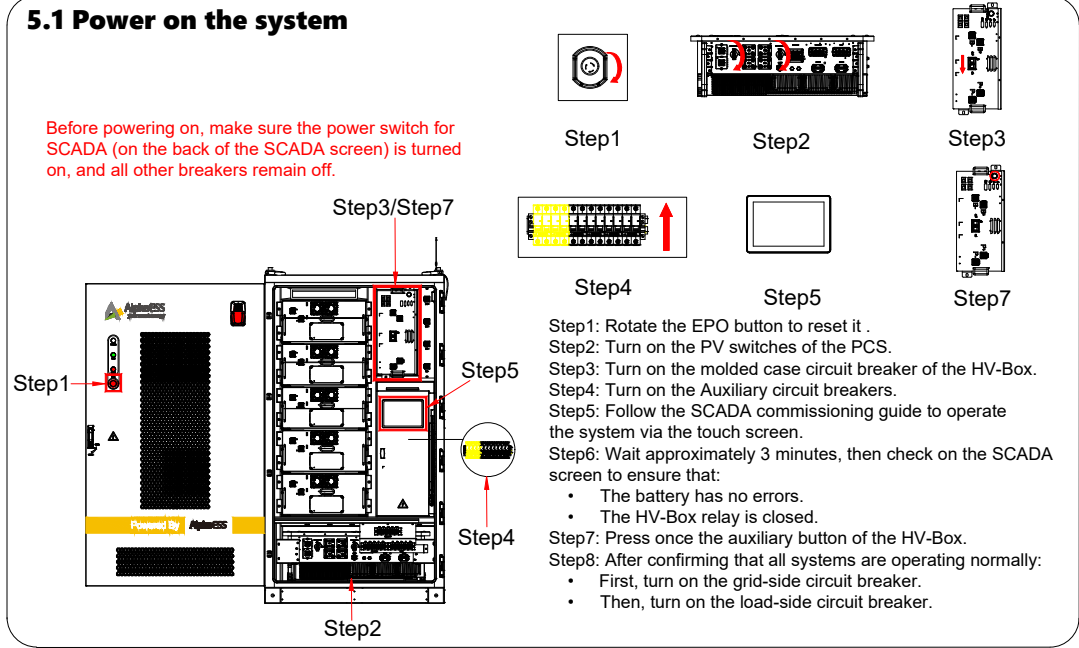


4. External Terminal Layout

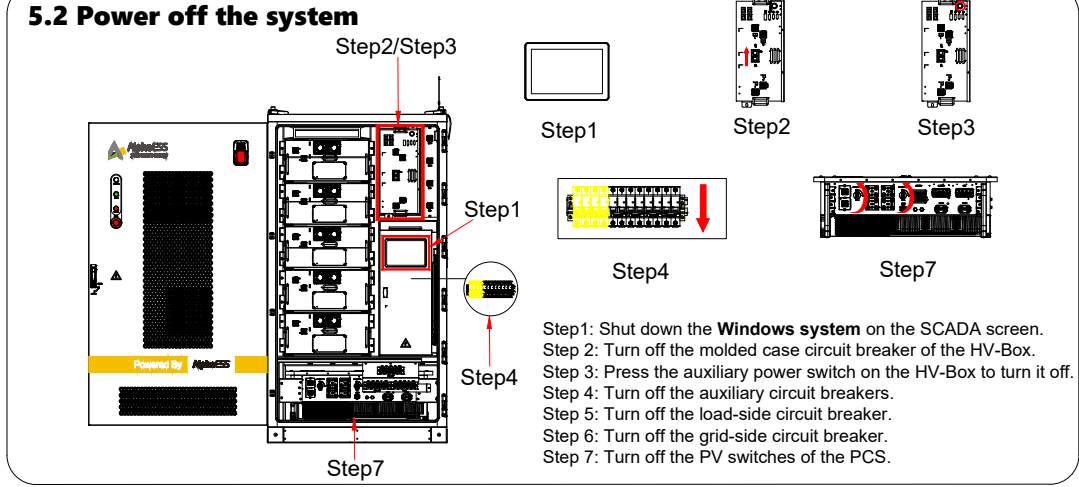


5. Commissioning

5.1 Power on the system



5.2 Power off the system



6. For more information, please download System User Manual and System Installation Manual



System Installation Manual



System User Manual



Alpha C&I Cloud



Alpha APP



Troubleshooting



Parallel SOP